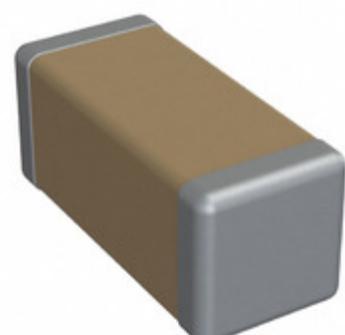


1808Y2K00391JXT



Part Number: [1808Y2K00391JXT](#)
Manufacturer: [Knowles Syfer](#)
Description: CAP CER 390PF 2KV X7R 1808
Data sheet: [MLCC Capacitor Datasheet](#)
[MLCC Catalog](#)

RoHS Status: Lead free / RoHS Compliant
Ship From: Hong Kong
Shipment Way: DHL/Fedex/TNT/UPS/EMS

Images are for reference only.
 See Product Specifications for product details.
 Buy 1808Y2K00391JXT with confidence from
 Component-World.HK, 1 Year Warranty

[Request For Quotation](#)

PRODUCT PARAMETER

Part Number	1808Y2K00391JXT	Manufacturer	Knowles Syfer
Description	CAP CER 390PF 2KV X7R 1808	Lead Free Status / RoHS Status	Lead free / RoHS Compliant
Quantity Available	103377 pcs	Data sheet	MLCC Capacitor Datasheet MLCC Catalog
Category	Capacitors	Voltage - Rated	2000V (2kV)
Tolerance	±5%	Thickness (Max)	0.079" (2.00mm)
Temperature Coefficient	X7R (2R1)	Size / Dimension	0.177" L x 0.079" W (4.50mm x 2.00mm)
Series	FlexiCap™	Ratings	-
Packaging	Tape & Reel (TR)	Package / Case	1808 (4520 Metric)
Operating Temperature	-55°C ~ 125°C	Mounting Type	Surface Mount, MLCC
Moisture Sensitivity Level (MSL)	1 (Unlimited)	Manufacturer Standard Lead Time	8 Weeks
Lead Style	-	Lead Spacing	-
Lead Free Status / RoHS Status	Lead free / RoHS Compliant	Height - Seated (Max)	-
Features	Soft Termination	Failure Rate	-
Detailed Description	390pF ±5% 2000V (2kV) Ceramic Capacitor X7R (2R1) 1808 (4520 Metric)	Capacitance	390pF
Applications	Boardflex Sensitive		

Component-World.com is a Reliable Stocking Distributor of Electronic Components. We specialize in all Knowles Syfer series electronic components. We have 103377 pieces of Knowles Syfer 1808Y2K00391JXT in stock available now. Request a quote from electronics components distributor at Component-World.com, our sales team will contact you within 24 hours.
 RFQ Email: info@Components-World.com

RELATED PRODUCTS

	Part#: 1808Y2K00390JCR Description: CAP CER 39PF 2KV C0G/NP0 1808	Manufacturers: Knowles Syfer	RFQ
	Part#: 1808Y2K00390FCR Description: CAP CER 39PF 2KV C0G/NP0 1808	Manufacturers: Knowles Syfer	RFQ
	Part#: 1808Y2K00390JCT Description: CAP CER 39PF 2KV C0G/NP0 1808	Manufacturers: Knowles Syfer	RFQ
	Part#: 1808Y2K00392JXT Description: CAP CER 3900PF 2KV X7R 1808	Manufacturers: Knowles Syfer	RFQ
	Part#: 1808Y2K00391M XR Description: CAP CER 390PF 2KV X7R 1808	Manufacturers: Knowles Syfer	RFQ
	Part#: 1808Y2K00332MXT Description: CAP CER 3300PF 2KV X7R 1808	Manufacturers: Knowles Syfer	RFQ
	Part#: 1808Y2K00391JXR Description: CAP CER 390PF 2KV X7R 1808	Manufacturers: Knowles Syfer	RFQ
	Part#: 1808Y2K00390GCT Description: CAP CER 39PF 2KV C0G/NP0 1808	Manufacturers: Knowles Syfer	RFQ
	Part#: 1808Y2K00391KXR Description: CAP CER 390PF 2KV X7R 1808	Manufacturers: Knowles Syfer	RFQ
	Part#: 1808Y2K00392JXR Description: CAP CER 3900PF 2KV X7R 1808	Manufacturers: Knowles Syfer	RFQ
	Part#: 1808Y2K00390KCT Description: CAP CER 39PF 2KV C0G/NP0 1808	Manufacturers: Knowles Syfer	RFQ
	Part#: 1808Y2K00392MXT Description: CAP CER 3900PF 2KV X7R 1808	Manufacturers: Knowles Syfer	RFQ
	Part#: 1808Y2K00392KXR Description: CAP CER 3900PF 2KV X7R 1808	Manufacturers: Knowles Syfer	RFQ
	Part#: 1808Y2K00392M XR Description: CAP CER 3900PF 2KV X7R 1808	Manufacturers: Knowles Syfer	RFQ
	Part#: 1808Y2K00391KXT Description: CAP CER 390PF 2KV X7R 1808	Manufacturers: Knowles Syfer	RFQ
	Part#: 1808Y2K00390FCT Description: CAP CER 39PF 2KV C0G/NP0 1808	Manufacturers: Knowles Syfer	RFQ
	Part#: 1808Y2K00390KCR Description: CAP CER 39PF 2KV C0G/NP0 1808	Manufacturers: Knowles Syfer	RFQ
	Part#: 1808Y2K00391MXT Description: CAP CER 390PF 2KV X7R 1808	Manufacturers: Knowles Syfer	RFQ
	Part#: 1808Y2K00392KXT Description: CAP CER 3900PF 2KV X7R 1808	Manufacturers: Knowles Syfer	RFQ
	Part#: 1808Y2K00390GCR Description: CAP CER 1808	Manufacturers: Knowles Syfer	RFQ

Related keywords for 1808Y2K00391JXT

Knowles Syfer 1808Y2K00391JXT	1808Y2K00391JXT distributor	1808Y2K00391JXT supplier	1808Y2K00391JXT price
1808Y2K00391JXT download datasheet	1808Y2K00391JXT datasheet	1808Y2K00391JXT stock	buy 1808Y2K00391JXT
Knowles Syfer 1808Y2K00391JXT	Syfer 1808Y2K00391JXT		